

White Ring-Light 40 LED ϕ 66mm, for HD Cameras

Product No. OP-006 385



Ring-light containing 40 white LEDs for bright and homogenous illumination of objects. Designed for assembly on Optilia W10x-HD, W20x-HD and M20x-HD cameras. The compact control unit features an ON-OFF switch, brightness control and two outputs for connection to LED illumination units. With Segment control unit, user can toggle 4 groups of LEDs clockwise or anticlockwise.

Specification:

Ring light	
Number of LEDs	40 pcs
Colour temperature	5.000 K
Material	Aluminium
Attachment to camera	Circumferential clamp with spring and screw
Inner Diameter	ϕ 66 mm
Working distance	55–120 mm
Control unit (standard and Segment)	
Power supply	24 V DC, 250 mA, hollow pin plug 5.5 x 2.1 mm,
Connections to Ring-light /spot-light	2 x 9-pin mini DIN sockets
Other	ON-OFF switch and potentiometer wheel
Dimensions	Outer: ϕ 94 mm x 25 mm. Inner: ϕ 66 mm

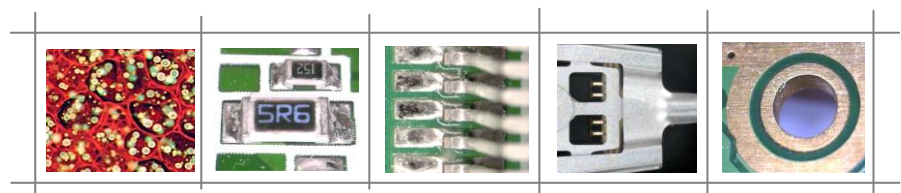
Including items when you order OP-006 385:

- Ring-Light 40 LEDs ϕ 66mm
- Segment control unit
- Power supply and mains cable
- Instructions manual



Optional accessories:

- Polarization set, OP-006 380
- Diffuser, OP-006 383



RingLight Incident Illumination

With RingLight illumination, light is incident (i.e. illuminated along optical axis and strikes the object). Ring Light incident illumination prevents shadowing and focuses the light at an angle to the centre of the object being illuminated. Angle of the incident light depends on object distance of the camera!

RingLight illumination can be equipped with crossed polarizing filters (Polarizer/Analyser) or diffuser filter.

RingLight illumination is well suited for following applications:

- Electronics PCBs and components.
- Coating inspection.
- Soldering inspection.
- Precision semitransparent or opaque plastic parts.
- Fibers, hairs, yeast and protozoa.
- Minerals and crystals, thin polymers and some ceramics.
- Forensics.

