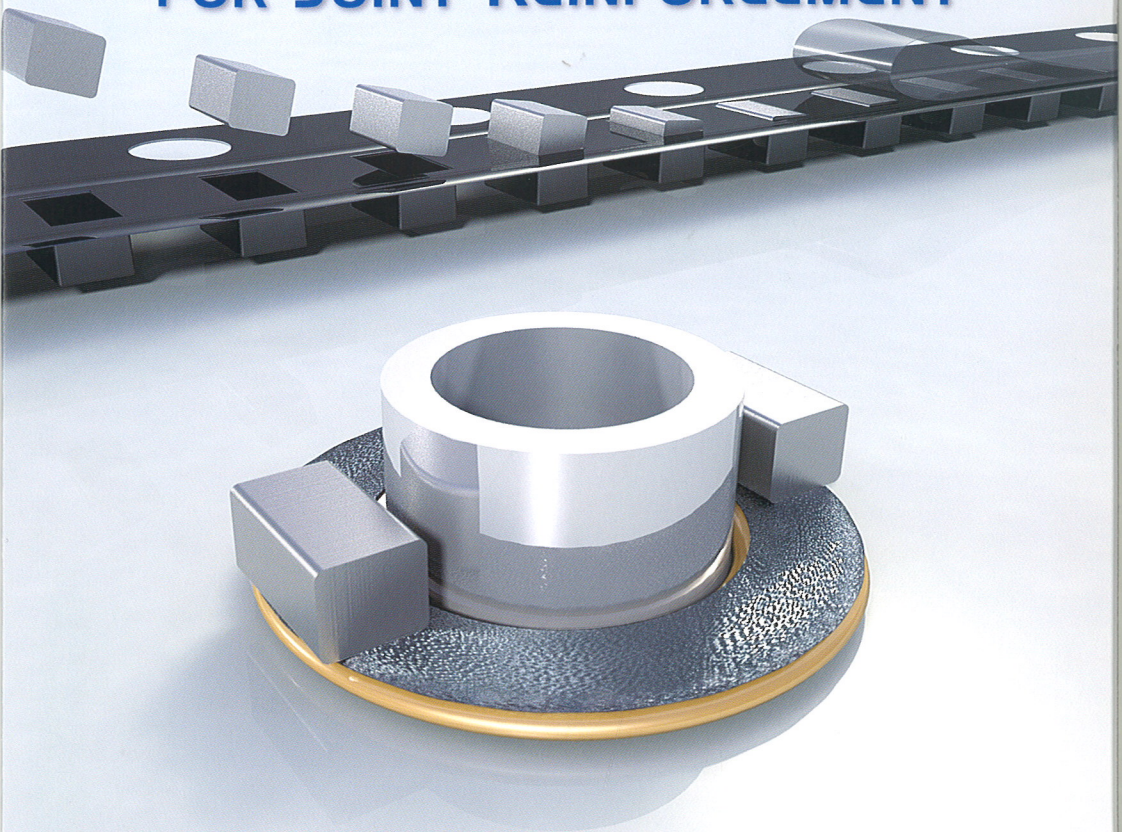


SMIC

PREFORM CHIP SOLDER FOR JOINT REINFORCEMENT

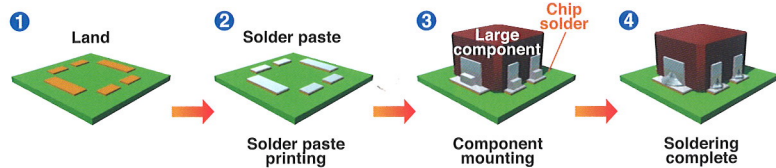


**“Chip solder” for lands
where a lack of solder is anticipated**

- They come in tape and reel packaging which allows simultaneous automatic placement on surface mount devices.
- Melts in tandem with solder paste, requiring no additional soldering
- Provides an appropriate amount of solder to ensure high connection reliability

"Chip solder" for lands where a lack of solder is anticipated

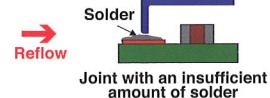
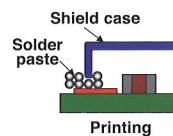
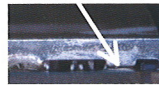
Application 1 For joint reinforcement of large components



Application 2 For joint reinforcement of shield cases

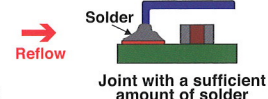
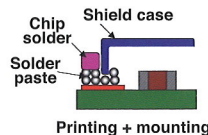
Conventional method

Joint with an insufficient amount of solder



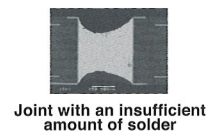
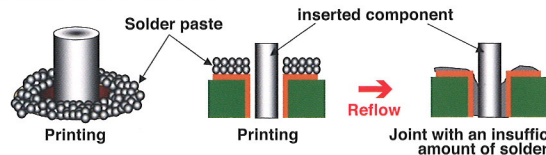
Solder is supplemented with chip solder

Joint with a sufficient amount of solder

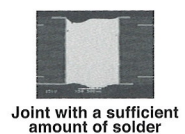
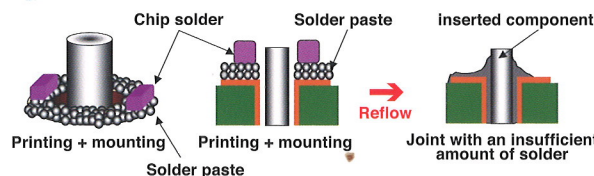


Application 3 For reinforcement of reflow solder joints of through-hole components

Conventional method



Solder is supplemented with chip solder



The 0402 size type is available for those devices where minimal solder connection is expected.



0603

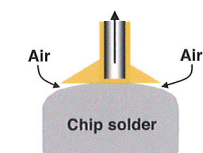


1005

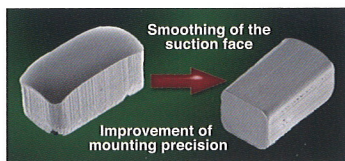


3216

Improves mounting precision by smoothing the suction face



Air enters when the suction face is curved, weaken the suction force.



- Smooth suction face design is available in sizes smaller than the 0603-size type
- Patent pending



No air enters when the suction face is flat and the suction face is strong.

Chip solder product configurations

●Alloys

Product Name	Composition
M705	Sn-3Ag-0.5Cu
M31	Sn-3.5Ag-0.75Cu
M35	Sn-0.3Ag-0.7Cu
L20	Sn-58Bi
63Sn	63Sn-37Pb
60Sn	60Sn-40Pb

●Dimensions

Type	Dimensions(mm)			Mass (mm3)
	L	W	T	
0603	0.6	0.3	0.3	0.054
1005	1.0	0.5	0.5	0.250
1608	1.6	0.8	0.8	1.024
3216	3.2	1.6	0.8	4.096

*Please contact us concerning other compositions.

*There are paper and plastic as the tape materials.

SENJU METAL INDUSTRY CO., LTD. <http://www.senju-m.co.jp/>

■Office Locations

SENJU MANUFACTURING (EUROPE) LIMITED

Senju Metal Europe GmbH

Prague Branch
(Senju Metal Europe GmbH)

SENJU METAL ITALIA S.R.L.

BEIJING SENJU ELECTRONIC MATERIALS CO., LTD.

Senju Metal (Tianjin) Co., Ltd.

SENJU METAL (SHANGHAI) CO., LTD.

SENJU METAL (HUIZHOU) CO., LTD.

SHENZHEN BRANCH
(SENJU METAL (HUIZHOU) CO., LTD.)

SENJU METAL (HONG KONG) LIMITED
SENJU SOLNET METAL CO., LIMITED

SENJU (THAILAND) CO., LTD.

SENJU (MALAYSIA) SDN. BHD.
SENJU TRADING (M) SDN. BHD.

SENJU SOLDER (PHILS.) INC.

Senju Metal Korea Co., Ltd.

SMIC

Tokyo, Japan / Headquarter

KOREA BRANCH : Gyeonggi-Do, Korea
TAIWAN BRANCH : Kaohsiung, Taiwan
KAOHSIUNG BRANCH : Kaohsiung, Taiwan

SENJU AMERICA INC.

SENJU COMTEK CORP.

Senju Comtek do Brazil, Ltda.

● Sales and Manufacturing Site

● Sales Office

Beware of counterfeit products.
Counterfeit flux cored and other inauthentic Senju solder products have been circulating abroad.
Always purchase genuine Senju products from Senju subsidiaries or authorized distributors.